

DIAMOND[®]

RIGID PVC ELECTRICAL CONDUITS & ACCESSORIES

IS:9537



PART III

When That what is Best, Counts.



Tolsons Pipes & Profiles Pvt. Ltd.
Mumbai (India).



DIAMOND[®]

TPP

DIAMOND[®]

RIGID PVC ELECTRICAL CONDUITS & ACCESSORIES



Two Sides of the Coin we Mint

Tolsons Pipes & Profiles Pvt. Ltd., established 30 years ago on the firm foundations of **QUALITY & SAFETY**, has through sheer dint of innovative effort, grown into a force to reckon with in the Rigid PVC Electrical Conduit and accessories Industry.

Safety First & Foremost -

DIAMOND Rigid PVC Electrical Conduits have established an enviable name for themselves in the Indian Industry. A name that's been built with sheer grit & determination & an attitude that simply refuses to compromise as far as quality is concerned. So much so that, it has become generic name and Rigid PVC Electrical Conduits and accessories mean **DIAMOND**.

DIAMOND Rigid PVC Electrical Conduits score over Mild Steel Conduits on every single count. They are more aesthetic in appearance and economical than M. S. Conduits. Their light weight (Approx. 1/6th the weight of M. S. Conduits) makes for ease in transportation, handling and installation. Also they are inert to most chemicals and are unaffected by rust and corrosion unlike Mild Steel Products.

Lastly they are shockproof and hence prevent accidents caused due to leakages in wiring. Moreover accurate dimensions and close tolerances make them the **FIRST CHOICE** even compared to other PVC Conduits Products.

DIAMOND[®]



DIAMOND[®]

RIGID PVC ELECTRICAL CONDUITS & ACCESSORIES

RIGID PVD ELECTRICAL CONDUIT

S. No.	PROPERTY	Requirement of the Standard the Standard IS 9537 Part III 1983	REPORT	ADVANTAGES
1.	Bending	Should bend as per the recommendation of the manufacture	Cold bending with spring is possible even for an acute angle.	This reduces the fabrication time & eliminates use of fitting such as bend etc.
2.	Mechanical Strength (a) Rigidity (b) Impact Strength (c) Resistance to crushing	Should not flatten more than 25% underload of 750NT. No crack should appear at -0.5 with falling load on single blow. Should not flatten more than 25% under load	Does not flatten more than 20% No cracks appear at -0.5 C Flattens hardly 5- 10% underload	Excellent rigidity results in more strength Excellent insulation resistance protects life and renders use extremely safe even in extreme wet conditions & at low temperatures, snow etc. This helps is passing adequate number of wires through conduits after conduits have been embedded in concrete.
3.	Electrical Properties (a) Dielectric Strength (b) Insulation Resistance	Should not flatten more than 10% 1 min. after removal of load 2 KV Voltage applies for 15 mtrs., No breakdown should occur. Resistance should be greater than 100 M	Does not flatten more than 2-3 percent No breakdown occurs at 2 KV, 15 mts., at 3 KV, 15 mts. Resistance is of the order of 2000 M	Excellent property enabling conduit to withstand short circuit loads Excellent insulation resistance protects life & renders use extremely safe even in extreme wet conditions & at low temperatures, snow etc.
4.	Chemical Properties (a) Resistance to Acid (b) Resistance to Alkali	No effect No effect	No effect observed No effect observed	Safe in factories and Chemical plant area.

DIMENSIONAL DETAILS OF RIGID PLAIN CONDUITS OF INSULATING MATERIALS

IS - 9537 (PART - III) 1983

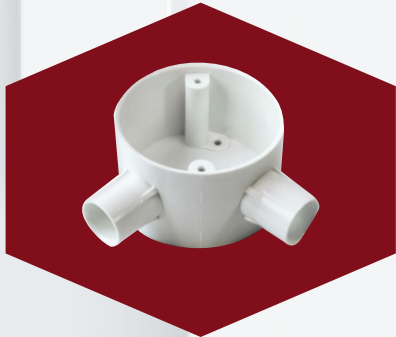
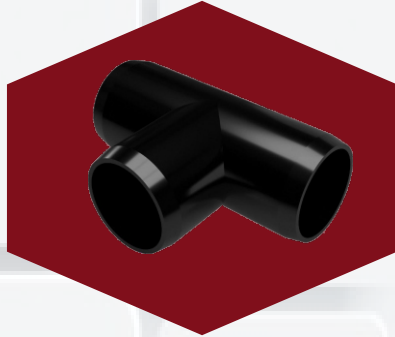
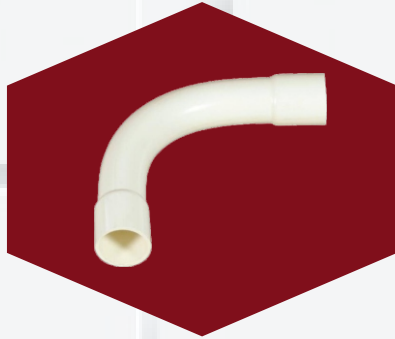
NORMAL SIZE	OUTSIDE DIAMETER	TOLERANCE ON OUTSIDE DIAMETER	LIGHT		MEDIUM		HEAVY	
			MIN. INSIDE DIAMETER	APPROX WALL THICKNESS	MIN. INSIDE DIAMETER	APPROX. WALL THICKNESS	MIN. INSIDE DIAMETER	APPROX. WALL THICKNESS
mm	mm	mm	mm	mm	mm	mm	mm	mm
20	20	-0.3	17.4	1.00 - 1.25	16.9	1.30 - 1.40	15.8	1.60 - 2.05
25	25	-0.4	22.1	1.10 - 1.35	21.4	1.45 - 1.70	20.6	1.80 - 2.10
32	32	-0.4	28.6	1.35 - 1.60	27.8	1.70 - 2.00	26.6	2.20 - 2.60
40	40	-0.4	35.8	1.70 - 2.00	35.4	2.10 - 2.20	34.4	2.35 - 2.70
50	50	-0.5	45.1	1.90 - 2.30	44.3	2.40 - 2.70	43.2	2.80 - 3.25

DIAMOND[®]

TPP

DIAMOND[®]

RIGID PVC ELECTRICAL CONDUITS & ACCESSORIES



APPROVED BY : F.I.A., P.W.D., MHADA, B.M.C., RBI & REPUTED BUILDERS

Authorised Distributor / Dealer

[Blank space for distributor name]



DIAMOND[®]

Get in Touch with Us

Contact Us:

Mr. Laxmikant Laddha: 09822332340

Giriraj Laddha: 09881245431

Rahul Laddha: 09881245432

 sales@rajelectricals.co.in

 <https://rajelectricals.co.in/>



Lighting Store:

583, Narayan Peth, Jaldhara Society,
Near Kanyashala, Pune-411030

Phone: (020) 24455293, 24461156,
24481583, 24486306, 24492424



Electrical Store:

353/2, Shaniwar Peth, Ramanbaug
Co-operative Hsg Society, Near
Ramanbaug School, Pune-411030.

Phone: 098812 45432



[rajelectricalspune](https://www.facebook.com/rajelectricalspune)



[raj__electricals](https://www.instagram.com/raj__electricals)