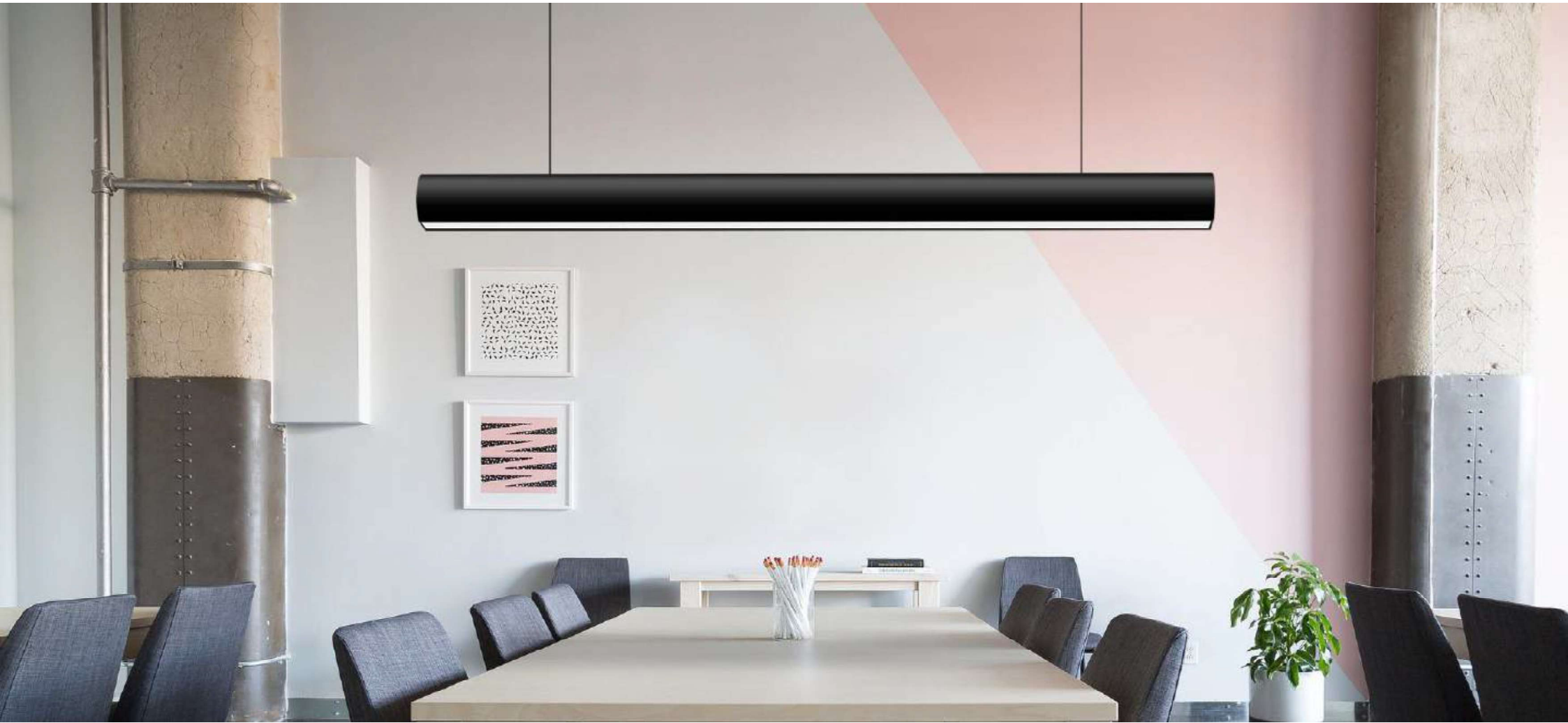


Legero

Company Profile

Brighter By Design



Unmatched quality
Made in India

Content

Organisation	—	5 - 7
Operational Overview	—	8 - 18
Credentials	—	19 - 26

Legero Lighting

With over a **decade of experience** in India and internationally. Our dynamic and creative teams have evolved and developed the best skills to provide state of art lighting solutions.

Simply put, we are not just a catalogue of products, we are **your extended team for lighting** application striving to achieve perfection in every project.



Our Story



Inspired by quality, our journey started a decade ago with passion of providing superior quality within client's budget. We have always believed and envisioned working as lighting solution providers which reflects in our range of products, developed for almost any given application.

With localised ecosystem, handpicked vendors, in-house research & testing and indigenous manufacturing, we believe in being market leaders in lighting solutions both at National and International platform.

Our Vision, Mission & Values

> Vision

To be among the top 3 lighting brands in India.

> Mission

To provide the best value for money for State of Art Lighting solutions.

> Value

- Passion is the heart of our business.
- Integrity is part of our culture.
- We value diversity.
- We marry customers for life.
- We care for the environment.



Our Team



Sanjeev Bhayana
Managing Director



Mahendra Khanna
Director - Sales & Marketing



Sankush Bhayana
Executive Director

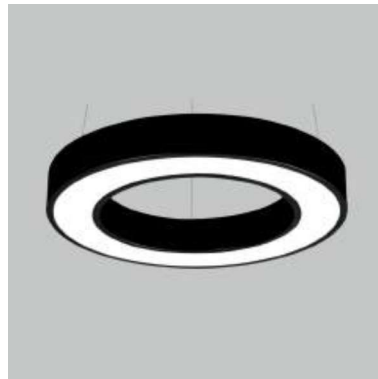
Strong core team with vast industry experience, working as a unit to realise common goal of being market leaders in LED lighting solution.

Our Products

Architectural Luminaires



Strapline



Ripple



Tulip



Pill

and more.....

Our Products

Industrial Luminaires



Blaze



Delphi



Strix



Stripo

and more.....

Our Products

Outdoor Luminaires



Astra



Bento



Pictor



Marshall

and more.....

Our Products

Recessed Luminaires



Modena



Delta



Pento



Amber 1x2

and more.....

Our Products

Recessed Downlights



Sol



Mia



Atmos



Triple Docco

and more.....

Our Products

Surface & Suspended Fixtures



Moon Light
Suspended



Tubo



Nora



Mento

and more.....

Our Products

Customised Solutions



Crescent



Petal



Hexo

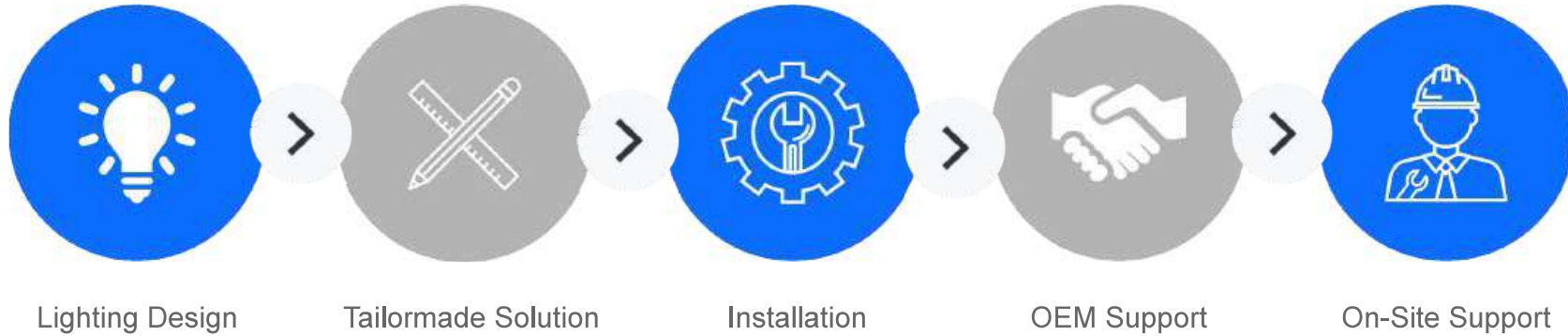


Trio

and more.....

**Tailormade
Solutions**

Our Services

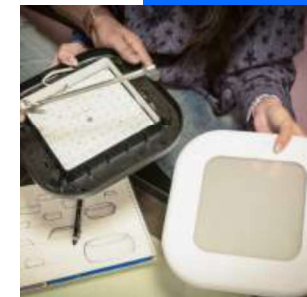


R&D Setup

Our Research & Development laboratory comprises various types of testing equipment. These help us keep up with the latest industry standards in the field of lighting. Our lab also caters to harnessing newer technologies in manufacturing, thus helping us achieve maximum efficiency, top-notch quality to leave a minimal carbon footprint.

Testing Instruments

- Power Analyzers
- Spectrometer
- Humidity chamber
- Thermal imager
- LCR meter
- Goniophotometer
- Integrated Sphere
- Digital Oscilloscope
- Abnormal Tests Equipments



Manufacturing Setup

Our team comprises of locally skilled employees with strong product validation and QC standards set to produce quality products. With updated machinery and equipments, it has eased achieving manufacturing efficiency. We are capable of executing supplies of projects of any scale with current available bandwidth and setup.

- **50000 sq. ft.** of built up manufacturing facility
- Line and Ageing test to improve product performance
- Updated machinery
- In-house **driver design & development** setup
- **SMT machine** for in house LED mounting
- Tool designing Team for OEM working



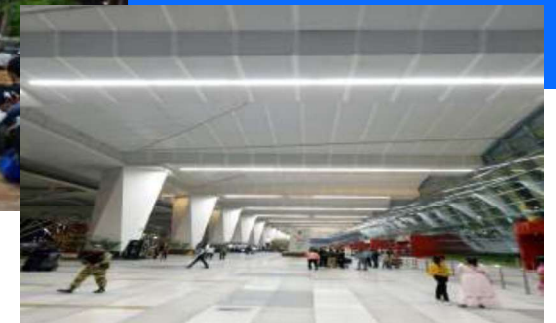
Contract Manufacturing - OEM

Over the years, we have built strong foundation of technical and lean manufacturing model which are in accordance with industry standards. Testing at every stage to ensure superior product quality for our clients. As an **OEM** of wide range of **LED** fixtures, we can partner to provide specific or range of products to any capacity for an individual or a brand. Our product development, testing and manufacturing are all in line with industry standards

- Driver design, development and manufacturing
- Products for any specification
- Strong client orientation
- Huge capacity for any scale of production
- Design support and development to cater to specific requirement



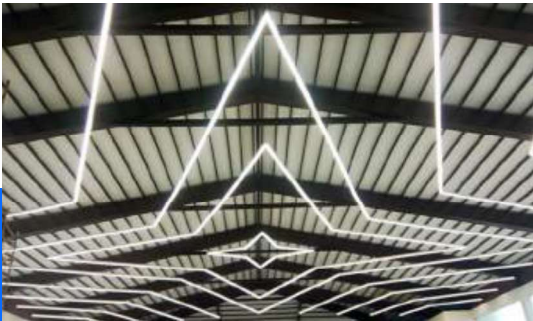
Our Projects



IGI Airport Terminal - T3, Delhi

Our Projects

Commercial Lighting



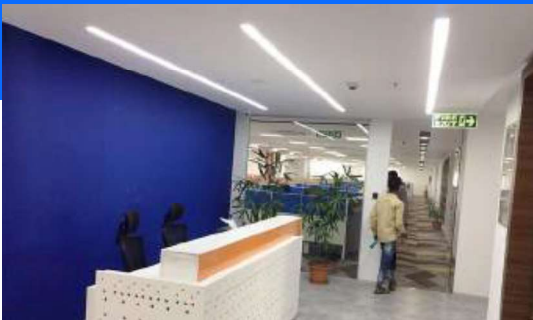
Kalyana Mantapa, Bangalore



Intas, Ahmedabad



LG Chem, Gurgaon



IIFL, Bangalore



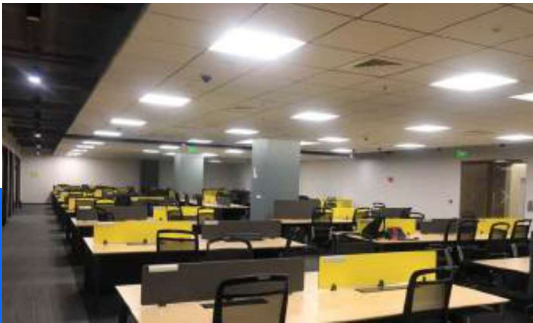
Corporate Edge Office, Connaught Place



Sirion Lab, Gurugram

Our Projects

Commercial Lighting



Synechron, Kharadi



Vaan Earth, Lokhandwala Mumbai



Piramal, Gurgaon



Tata Sky, Mumbai



Freecharge



Piramal, Gurgaon

Our Projects

Industrial Lighting



Gay Chap Besan, Ahmedabad



Germany Carpet Manufacturing
Showroom & factory, Kathmandu



Polyone Polymer

Our Projects

Institutional Lighting



Nepal Army Headquarters,
Kathmandu



Kalyani School Sports Courtyard,
Pune



GE Gym, Chakan



Symbiosis, Nagpur



Fitness World, Noida



Symbiosis Sandipani, Pune

Our Projects

Retail/Showroom Lighting



Vaan Earth, Lokhandwala Mumbai



Nagarkar Jewellers, Pune



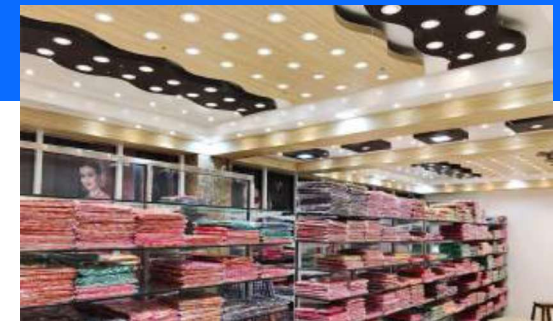
Bafna Pune



iZenica



BMW Showroom, Kathmandu



Jepi Ahmedabad

Our Projects

Road/Landscape Lighting



Punjab Mandi Board, Tanda
Jalandhar



Symbiosis Sandipani, Pune



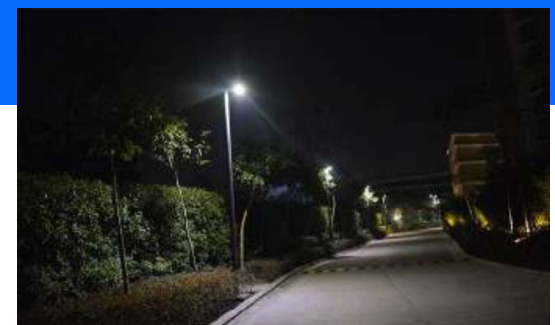
Cleo County, Noida



Cleo County, Noida



Naveen Market, Kanpur



Relay, Bangalore

Our Clients



Get in Touch with Us

Contact Us:

Mr. Laxmikant Laddha: 09822332340

Giriraj Laddha: 09881245431

Rahul Laddha: 09881245432

 sales@rajelectricals.co.in

 <https://rajelectricals.co.in/>



Lighting Store:

583, Narayan Peth, Jaldhara Society,
Near Kanyashala, Pune-411030

Phone: (020) 24455293, 24461156,
24481583, 24486306, 24492424



Electrical Store:

353/2, Shaniwar Peth, Ramanbaug
Co-operative Hsg Society, Near
Ramanbaug School, Pune-411030.

Phone: 098812 45432



[rajelectricalspune](https://www.facebook.com/rajelectricalspune)



[raj__electricals](https://www.instagram.com/raj__electricals)